

JRE1 - SAE 100 R1

MEDIUM PRESSURE WIRE BRAID HOSE



Dash sizes	3	4	5	6	6.5	8	10	12	14	16	20	24	32
ID in inches	3/16"	1/4"	5/16"	3/8"	13/32"	1/2"	5/8"	3/4"	7/8"	1"	1.1/4"	1.1/2"	2"
ID in mm	4.8	6.4	7.9	9.5	10.3	12.7	15.9	19.0	22.2	25.4	31.8	38.1	50.8
OD in mm max	13.5	16.7	18.3	20.6	21.4	23.8	27.0	31.0	34.1	39.2	47.6	54.0	68.3
Operating pressure psi.	3000	2750	2500	2250	2250	2000	1500	1250	1125	1000	625	500	375
Min. Bend radius mm.	90	102	114	127	140	178	203	241	279	305	419	508	635

Construction : Tube : Black, Oil resistant synthetic rubber.

Reinforcement : Single wire braid.

Cover : Black, Oil abrasion and weather ageing resistant synthetic rubber.

Application : Hydraulic, crude, fuel and lubricating oils, gasoline, water and air.

Temperature : -40C to +93C (-40F to +200F). (Intermittent +120C).

JRE 2 –SAE 100 R2 A

HIGH PRESSURE WIRE BRAID HOSE



Dash sizes	3	4	5	6	8	10	12	14	16	20	24	32
ID in inches	3/16"	1/4"	5/16"	3/8"	1/2"	5/8"	3/4"	7/8"	1"	1.1/4"	1.1/2"	2"
ID in mm	4.8	6.4	7.9	9.5	12.7	15.9	19.0	22.2	25.4	31.8	38.1	50.8
OD in mm max	13.5	16.7	18.3	20.6	23.8	27.0	31.0	34.1	39.2	47.6	54.0	68.3
Operating pressure psi.	3000	2750	2500	2250	2000	1500	1250	1125	1000	625	500	375
Min. Bend radius mm.	90	102	114	127	178	203	241	279	305	419	508	635

Construction : Tube : Black, Oil resistant synthetic rubber.

Reinforcement : Double wire braid.

Cover : Black, Oil abrasion and weather ageing resistant synthetic rubber.

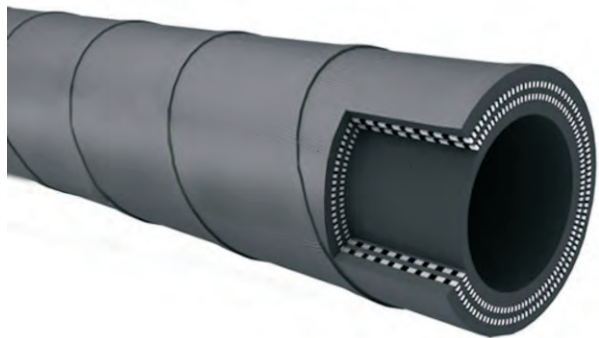
Application : Hydraulic, crude, fuel and lubricating oils, gasoline.

Temperature : -40C to +93C (-40F to +200F). (Intermittent +120C).



JRE₃ – SAE 100 R₃

MEDIUM PRESSURE TEXTILE BRAID HOSE



Dash sizes	3	4	5	6	8	10	12	16	20	24	32
ID in inches	3/16"	1/4"	5/16"	3/8"	1/2"	5/8"	3/4"	1"	1.1/4"	1.1/2"	2"
ID in mm	4.8	6.4	7.9	9.5	12.7	15.9	19.0	25.4	31.8	38.1	50.8
OD in mm max	13.5	15.1	18.3	19.8	24.6	27.8	32.5	39.3	44.5	50.8	66.8
Operating pressure psi.	1500	1250	1200	1125	1000	875	750	565	375	250	200
Min. Bend radius mm.	76	76	102	102	127	140	152	203	254	380	500

Construction : Tube : Black, Oil resistant synthetic rubber.

Reinforcement : Double braid of suitable textile yarn.

Cover : Black, Oil and weather resistant synthetic rubber.

Application : Hydraulic oils, fuel oils anti-freeze solutions and water.

Temperature : -40C to +93C (-40F to +200F). (Intermittent +120C).

JRE 4 – SAE 100 R4

LOW PRESSURE SUCTION AND DISCHARGE HYDRAULIC HOSE



Dash sizes	12	16	20	24	32	40	48
ID in inches	¾"	1"	1.1/4"	1.1/2"	2"	2.1/2"	3"
ID in mm	19.0	25.4	31.8	38.1	50.8	63.5	76.2
OD in mm max	34.9	41.3	50.8	57.2	69.9	82.6	95.3
Operating pressure psi.	300	250	200	150	100	62	56
Min. Bend radius mm.	127	152	203	254	305	356	457

Construction : Tube : Black, Oil resistant synthetic rubber.

Reinforcement : Consisting of braided textile fibres with a suitable spiral of body wire.

Cover : Black, Oil and weather resistant synthetic rubber.

Application : Petroleum based hydraulic oils, gasoline and fuel oils in suction lines or low pressure return lines.

Temperature : -40C to +93C (-40F to +200F). (Intermittent +120C).



JRE 5 – SAE 100 R5

MEDIUM PRESSURE WIRE AND TEXTILE BRAID HOSE (TEXTILE/RUBBER COVER)



Dash sizes	4	5	6	8	10	12	16	20	24	32	40
ID in inches	3/16"	1/4"	5/16"	13/32"	1/2"	5/8"	7/8"	1.1/8"	1.3/8"	1.13/16"	2.3/8"
ID in mm	4.8	6.4	7.9	10.3	12.7	15.9	22.2	28.6	34.9	46.0	60.0
OD in mm max	13.7	15.3	17.6	20.0	24.0	28.0	32.2	38.9	45.2	57.6	75.0
Operating pressure psi.	3000	3000	2250	2000	1750	1500	800	625	500	350	350
Min. Bend radius mm.	76	86	102	117	140	165	187	229	267	337	500

Construction : Tube : Black, Oil resistant synthetic rubber.

Reinforcement : Single wire braid.

Cover : Closed two textile braids impregnated with an oil and mildew resistant synthetic rubber compound.

Application : Hydraulic, crude, fuel and lubricating oils, gasoline.

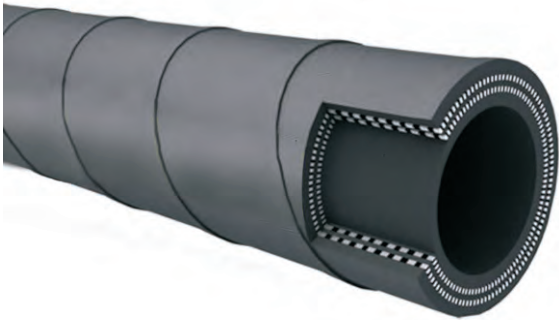
Temperature : -40C to +93C (-40F to +200F). (Intermittent +120C).

Note : Operating temperature in excess of 200F (93C) may materially reduce the service life of hose assembly.

Max. change in length under working pressure: +2%-4%

JRE 6 – SAE 100 R6

LOW PRESSURE TEXTILE BRAID HOSE



Dash sizes	3	4	5	6	8	10	12	14	16	20	24	32
ID in inches	3/16"	1/4"	5/16"	3/8"	1/2"	5/8"	3/4"	7/8"	1"	1.1/4"	1.1/2"	2"
ID in mm	4.8	6.4	7.9	9.5	12.7	15.9	19.0	22.2	25.4	31.8	38.1	50.8
OD in mm max	11.9	13.5	15.1	16.7	20.6	23.8	26.0	30.0	35.1	41.5	47.8	63.7
Operating pressure psi.	500	400	400	400	400	350	245	225	225	200	150	100
Min. Bend radius mm.	51	64	76	76	102	127	177	177	260	320	400	500

Construction : Tube : Black, Oil resistant synthetic rubber.

Reinforcement : Single braid of suitable textile yarn.

Cover : Black, Oil and weather resistant synthetic rubber.

Application : Hydraulic liquids, air, water, oils, fuel, propane and butane gas.

Temperature : -40C to +93C (-40F to +200F). (Intermittent +120C).

Note : Operating temperature in excess of 200F (93C) may materially reduce the life of hose assembly.



JRE 7 – SAE 100 R7

MEDIUM PRESSURE THERMO PLASTIC HOSE



Dash sizes	4	6	8
ID in inches	1/4"	3/8"	1/2"
ID in mm	6.4	9.5	12.7
OD in mm max	13.0	17.8	21.8
Operating pressure psi.	2750	2250	2000
Min. Bend radius mm.	102	127	178

Construction : Tube : Polyester.

Reinforcement : Polyester yarn.

Cover : Polyurethane.

Application : Hydraulic, crude, fuel and lubricating oils, gasoline.

Temperature : -40C to +93C (-40F to +200F). (Intermittent +120C).

Note : Operating temperature in excess of 200F (93C) may materially reduce the service life of hose assembly.

Max. change in length under working pressure: +3%-3%.

JRE 8 – SAE 100 R8

HIGH PRESSURE THERMO PLASTIC HOSE



Dash sizes	4	6	8
ID in inches	1/4"	3/8"	1/2"
ID in mm	6.4	9.5	12.7
OD in mm max	16.8	20.3	24.6
Operating pressure psi.	5000	4000	3500
Min. Bend radius mm.	102	127	178

Construction : Tube : Nylon.

Reinforcement : Polyester yarn.

Cover : Polyurethane.

Application : Hydraulic, crude, fuel and lubricating oils, gasoline.

Temperature : -40C to +93C (-40F to +200F). (Intermittent +120C).

Note : Operating temperature in excess of 200F (93C) may materially reduce the service life of hose assembly.

Max. change in length under working pressure: +3%-3%.



JRE 9 – SAE 100 R9

HIGH PRESSURE WIRE SPIRAL HOSE



Dash sizes	6	8	12	16	20	24	32
ID in inches	3/8"	1/2"	3/4"	1"	1.1/4"	1.1/2"	2"
ID in mm	9.5	12.7	19.0	25.4	31.8	38.1	50.8
OD in mm max	22.2	25.4	32.2	40.9	52.4	58.7	73.0
Operating pressure psi.	4500	4000	3000	3000	2500	2000	2000
Min. Bend radius mm.	127	178	241	305	419	508	660

Construction : Tube : Black, Oil resistant synthetic rubber.

Reinforcement : Four spiral piles of wire wrapped in alternating directions.

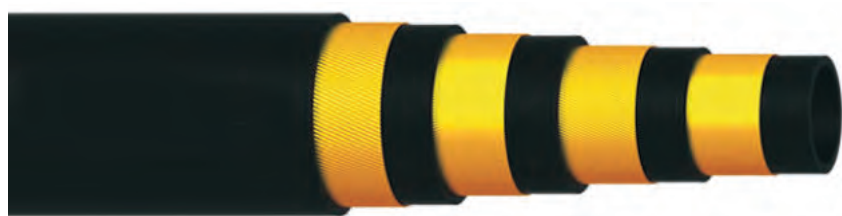
Cover : Resistant to weather, oils and abrasion synthetic rubber.

Application : High pressure Hydraulic service petroleum based hydraulic liquids, water, diesel, fuel and lubricating oils.

Temperature : -40C to +93C (-40F to +200F). (Intermittent +120C).

JRE 10 – SAE 100 R10

HIGH PRESSURE WIRE SPIRAL HOSE



Dash sizes	3	4	6	8	12	16	20	24	32
ID in inches	3/16"	1/4"	3/8"	1/2"	3/4"	1"	1.1/4"	1.1/2"	2"
ID in mm	4.8	6.4	9.5	12.7	19.0	25.4	31.8	38.1	50.8
OD in mm max	19.8	21.4	24.6	28.6	37.3	45.6	52.4	58.7	72.2
Operating pressure psi.	10000	8750	7500	6250	5000	4000	3000	2500	2500
Min. Bend radius mm.	102	127	152	203	279	356	457	559	711

Construction : Tube : Black, Oil resistant synthetic rubber.

Reinforcement : Four spiral heavy duty piles of high tensile steel wire wrapped in alternating directions.

Cover : Resistant to weather, oils and abrasion synthetic rubber.

Application : Extra high pressure Hydraulic service petroleum based hydraulic liquids, water, diesel, fuel and lubricating oils.

Temperature : -40C to +93C (-40F to +200F). (Intermittent +120C).

Note : Operating temperature in excess of 200F (93C) may materially reduce the service life of hose assembly.

Max. change in length under working pressure: +2%-4%.



JRE 11 – SAE 100 R11

HIGH PRESSURE WIRE SPIRAL HOSE



Dash sizes	6	8	12	16	20	24	32
ID in inches	3/8"	1/2"	3/4"	1"	1.1/4"	1.1/2"	2"
ID in mm	9.5	12.7	19.0	25.4	31.8	38.1	50.8
OD in mm max	27.8	31.8	40.5	49.6	56.4	62.7	77.0
Operating pressure psi.	10000	7500	6250	5000	3500	3000	3000
Min. Bend radius mm.	152	203	279	356	457	559	711

Construction : Tube : Black, Oil resistant synthetic rubber.

Reinforcement : 6 high tensile wire spirals wrapped in alternating directions.

Cover : Black, Oil resistant synthetic rubber.

Temperature : -40C to +121C.

JRE 12 – SAE 100 R12

HIGH PRESSURE WIRE SPIRAL HOSE



Dash sizes	6	8	12	16	20	24	32
ID in inches	3/8"	1/2"	3/4"	1"	1.1/4"	1.1/2"	2"
ID in mm	9.5	12.7	19.0	25.4	31.8	38.1	50.4
OD in mm max	20.0	23.8	30.7	38.0	47.0	53.5	66.7
Operating pressure psi.	4000	4000	4000	4000	3000	2500	2500
Min. Bend radius mm.	127	178	240	300	419	500	630

Construction : Tube : Black, Oil resistant synthetic rubber.

Reinforcement : 4 high tensile wire spirals.

Cover : Black, Oil resistant synthetic rubber.

Temperature : -40C to +121C.





JRE 13 – SAE 100 R13

EXTRA HIGH PRESSURE WIRE SPIRAL HOSE



Dash sizes	4	6	8	12	16	*20	*24	*32
ID in inches	1/4"	3/8"	1/2"	3/4"	1"	1.1/4"	1.1/2"	2"
ID in mm	6.3	9.5	12.7	19.0	25.4	31.8	38.1	50.8
OD in mm max	20.4	23.8	27.0	32.0	39.2	49.8	57.3	71.0
Operating pressure psi.	11250	10000	7500	5000	5000	5000	5000	5000
Min. Bend radius mm.	127	152	200	240	300	419	500	630

- Construction : Tube : Black, Oil resistant synthetic rubber.
- Reinforcement : 6 high tensile wire spirals wrapped in alternating directions.
- Cover : Black, Oil resistant synthetic rubber.
- Temperature : -40C to +121C.

JRE 14 – DIN 20023-4SH

HIGH PRESSURE WIRE SPIRAL HOSE



Dash sizes	20	25	32	40	50
ID in inches	¾"	1"	1.1/4"	1.1/2"	2"
ID in mm	19.0	25.4	31.8	38.1	50.8
OD in mm max	32.0	38.0	45.2	53.5	68.0
Operating pressure psi.	6090	5510	4715	4205	3625
Min. Bend radius mm.	280	340	460	560	700

Construction : Tube : Black, Oil resistant synthetic rubber.

Reinforcement : 4 high tensile wire spirals.

Cover : Black, Oil resistant synthetic rubber.

Temperature : -40C to +121C.



JRE 15 – DIN 20023-4SP

HIGH PRESSURE WIRE SPIRAL HOSE



Dash sizes	6	10	12	16	20	25	32	40	50
ID in inches	¼"	3/8"	½"	5/8"	¾"	1"	1.1/4"	1.1/2"	2"
ID in mm	6.4	9.5	12.7	15.9	19.0	25.4	31.8	38.1	50.8
OD in mm max	17.8	21.4	24.6	28.5	32.0	39.7	50.8	57.0	70.6
Operating pressure psi.	6525	6450	6020	5075	5075	4060	3045	2680	2500
Min. Bend radius mm.	150	178	230	250	300	340	457	559	660

Construction : Tube : Black, Oil resistant synthetic rubber.

Reinforcement : 4 high tensile wire spirals.

Cover : Black, Oil resistant synthetic rubber.

Temperature : -40C to +121C.

JRE 16 – FLEXO – I

HIGH PRESSURE WIRE BRAID HOSE



Dash sizes	6	8	10	12	16
ID in inches	3/8"	1/2"	5/8"	3/4"	1"
ID in mm	9.5	12.7	15.9	19.0	25.4
OD in mm max	21.4	24.6	27.8	31.9	39.8
Operating pressure psi.	5000	5000	4250	3750	3000
Min. Bend radius mm.	130	150	190	230	300

Construction : Tube : Black, Oil resistant synthetic rubber.

Reinforcement : Double braid of high tensile wire.

Cover : Black, Oil and weather resistant synthetic rubber.

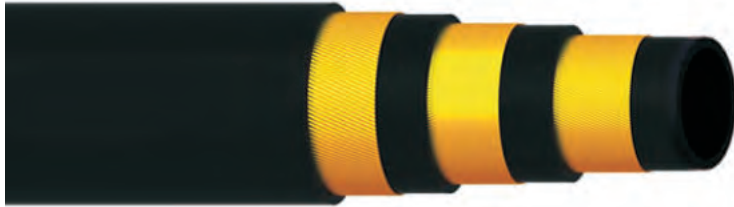
Application : Hydraulic liquids, air, water, oils, fuel, propane and butane gas.

Temperature : -40 Deg C to +93 Deg C



JRE 17 – FLEXO – II

HIGH PRESSURE HYDRAULIC HOSE



Dash sizes	3	4	5	6	8	10	12	16	20	24	32
ID in inches	3/16"	1/4"	5/16"	3/8"	1/2"	5/8"	3/4"	1"	1.1/4"	1.1/2"	2"
ID in mm	4.8	6.4	7.9	9.5	12.7	15.9	19.0	25.4	31.8	38.1	50.8
OD in mm max	16.1	17.9	20.2	22.5	25.8	29.5	34.0	41.5	50.8	57.8	70.7
Operating pressure psi.	6250	6250	5500	5250	4750	4250	3500	3200	2500	2000	2000
Min. Bend radius mm.	127	127	140	152	203	254	280	330	432	533	673

Construction : Tube : Black, Oil resistant synthetic rubber.

Reinforcement : Three high tensile steel wire wrapped braiding.

Cover : Black, oil and weather resistant synthetic rubber.

Application : Extra high pressure Hydraulic oil, fuel lubricating oil, water & air.

Temperature : -40C to +93C (-40F to +200F). (Intermittent +120C).

STANDARD HOSE FITTINGS WITH THREAD SPECIFICATIONS

HOSE SIZE		THREADS				COMPRESSION TYPE		BANJO TYPE	
ID mm Ins.		BSP	SAE	Metric	NPTF	Length mm	Pipe Dia mm	Width mm	Bore Dia mm
4	3/16	1/4"	7/16" - 20 UNF	M 12 x 1.5	1/8" x 27 1/4" x 18	25/20/22	5/6/8	10	10
6	1/4	1/4"	1/2" - 20 UNF	M 14 x 1.5	1/4" x 18	22/24	8/10	12	12
8	5/16	3/8"	5/8" - 18 UNF	M16 x 1.5	3/8" x 18	24/25	10/12	14	14
10	3/8	1/2"	3/4" - 16 UNF	M 18 x 1.5	3/8" x 18 1/4" x 18	25/27	12/14	16	16
13	1/2	5/8"	7/8" - 14 UNF	M 22 x 1.5	1/2" x 14	25/30	15/16	-	-
16	5/8	3/4"	1.1/16" - 12 UNF	M 26 x 1.5	3/4" x 14	25/32	18/20	-	-
20	3/4	1"	1.5/16" - 12 UNF	M 30 x 1.5	3/4" x 14	25/34	22/25	-	-
25	1	1.1/4"	1.5/8" - 12 UNF	M 38 x 1.5	1" x 11.1/2	25/36	28/30	-	-
32	1.1/4	1.1/2"	1.7/8" - 12 UNF	M 45 x 1.5	1.1/4" x 11.1/2	30/38	35/38	-	-
38	1.1/2	2"	2.1/4" - 12 UNF	M 52 x 1.5	1.1/2" x 1.1/2	36/70	42/50	-	-
50	2	2.1/2"	2.1/2" - 12 UNF	M 65 x 2	2" x 11.1/2	-	-	-	-

